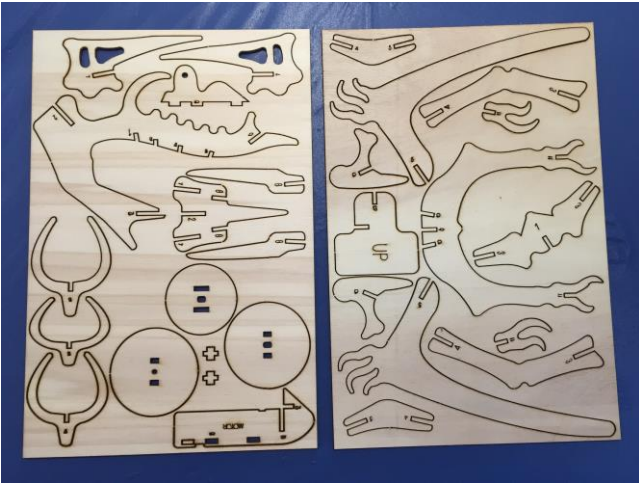


# Archaeopteryx 1

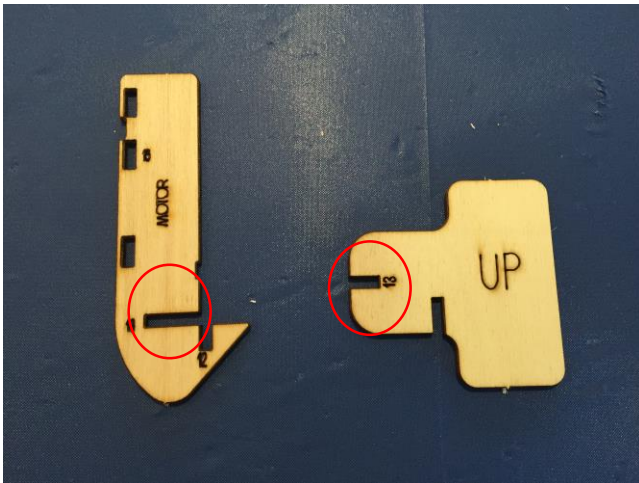


Before starting, make sure each student has a bag with his name on it.

All completed parts will be kept in the bag.

Cover all tables with table cloths.

This lesson we are going to glue the card and the head.



Pop out the parts shown in the pic.

Place both parts on the table when the words “up” and “motor” are facing up.

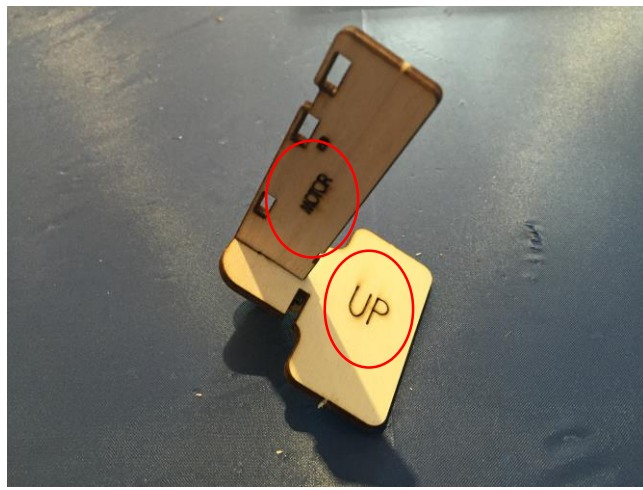
We are going to connect the parts from the side (red circle)

After explaining how to connect the parts, hand out the glue to the students.



Apply a little glue in the cracks marked in red in the previous picture.

Lift the “motor” part 90 degrees to the “up” part slide the parts slightly together. Check that the “up” is facing up, and the “motor” is facing you.



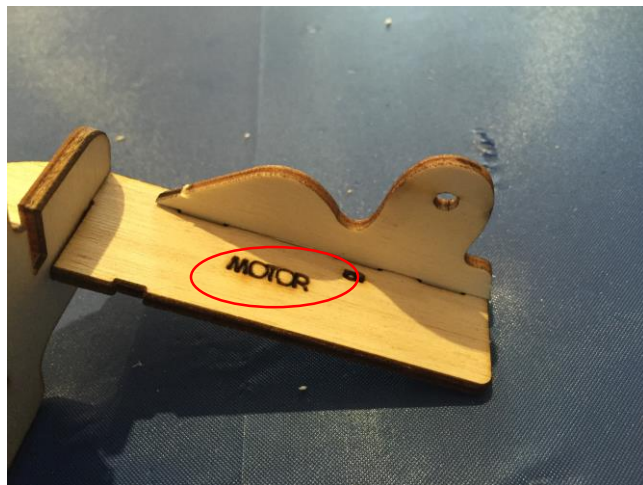
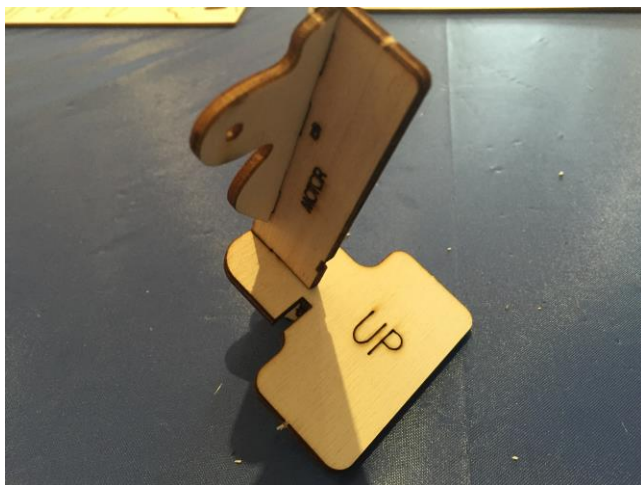
Once checked and confirmed, slide the part all the way through.

**CHECKPOINT!**  
Check all the models before continuing.



Once checked, pop out the part shown in the picture.

First show the students an example, then continue.



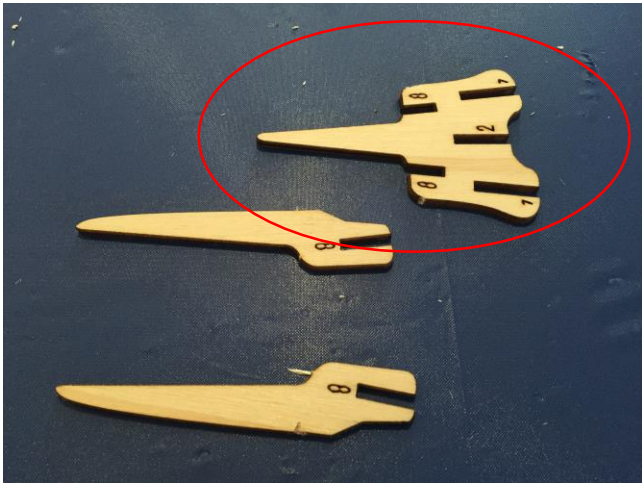
Place the card on the side so the "motor" is facing up.

Then glue the 3 part we just popped out.

**CHECKPOINT!!!**

Do not continue without checking all the cards. Fixing the cards later will be impossible.

Check the directions. Use the "up" & "motor" indicators.



Once all models were checked, continue.

Pop out the parts shown in the picture.

Main part (circled in red)

Other parts- lower jaw.



Apply glue.

Slide the lower jaw from left to right. Make sure the lower jaw touches the table, and the narrow side of the main part is above.

CHECKPOINT!



Once checked, you can continue to the next part.

Pop out the 2 parts of the face.



Apply glue in the cracks.

Slide the face from right to left, all the way in.



If did the first one correctly, assemble the 2<sup>nd</sup> one.

**CHECKPOINT!!!**

If looking from the side, the head should have the lower jaw on the bottom, main part in middle, and upper jaw on top.

If checked and done, you can color the model.

If class is over, have the students put all the completed parts in their bags. Collect the wooden plates (instructor must put students name on each plate) and clean the classroom.