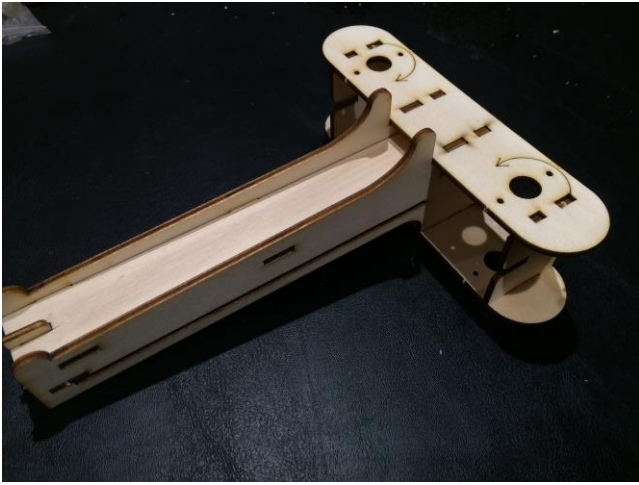


Ballista 3

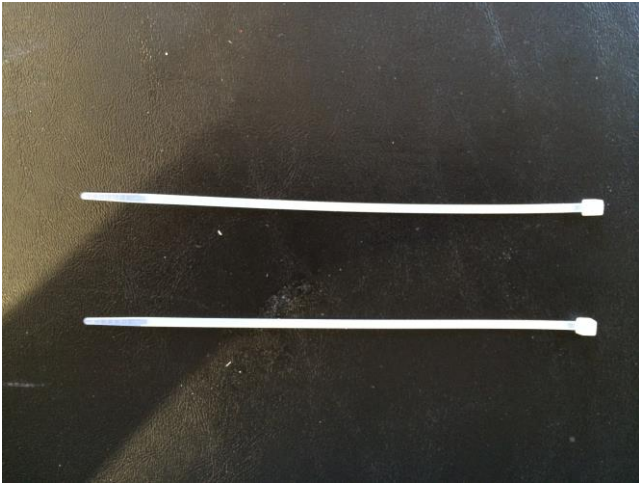


First check all the steps from the previous lesson.

If all the parts are connected correctly continue with the lesson plan.

Please follow carefully step by step this lesson plan.

Place the part on the table as shown in the picture!!!

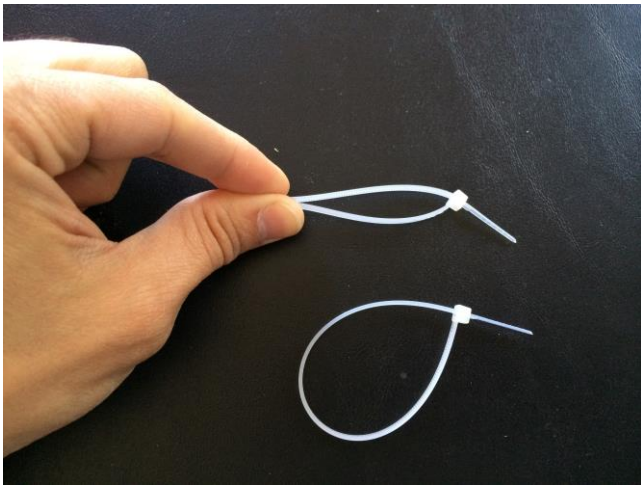


Hand each student 2 zip ties

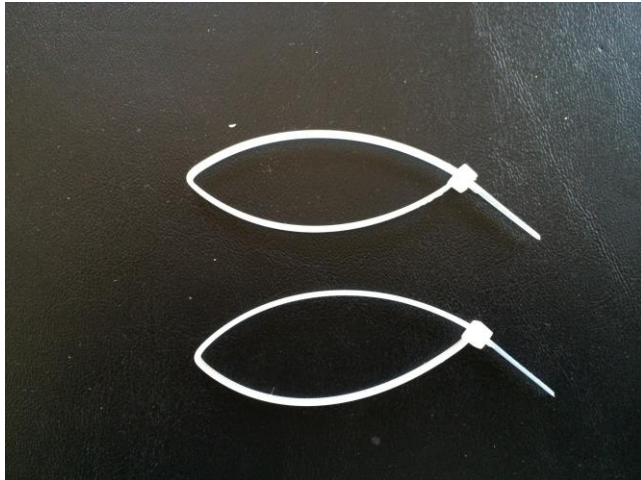


Tighten the zip ties, 2 or 3 clicks ONLY!

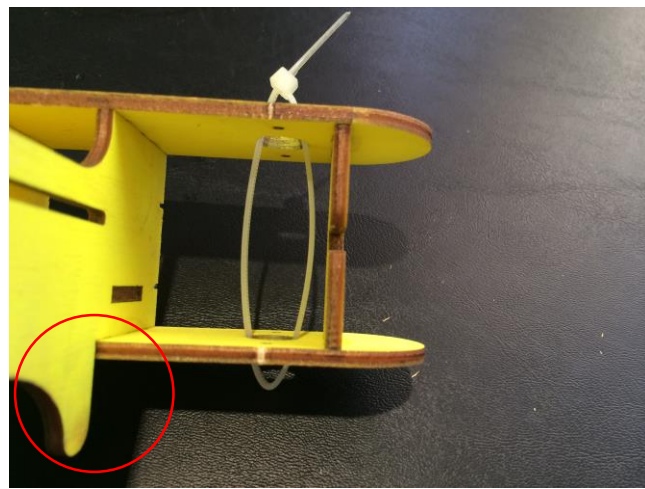
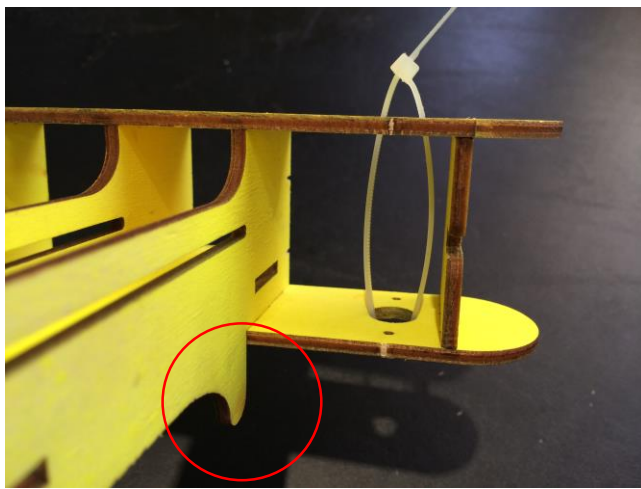
The tighter you close the zip tie, the harder it is to use it later.



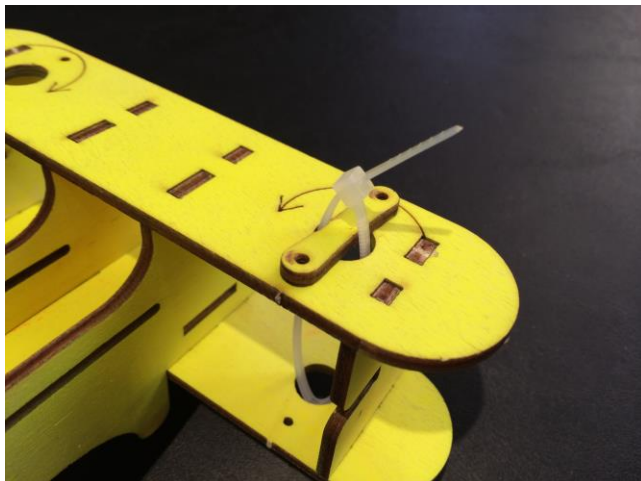
Press the round side of the zip tie



This is how the zip ties should look after pressing

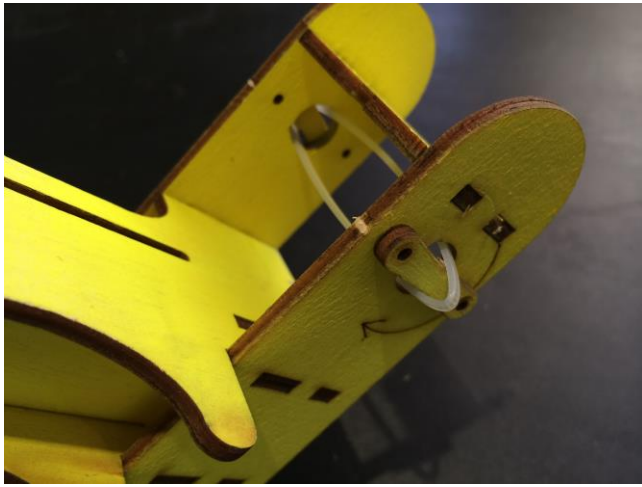


First, Place the model when the bump is facing the table (red circle) Insert 1 zip tie, through the side of the wing. Make sure the zip tie is in both holes (top and bottom)

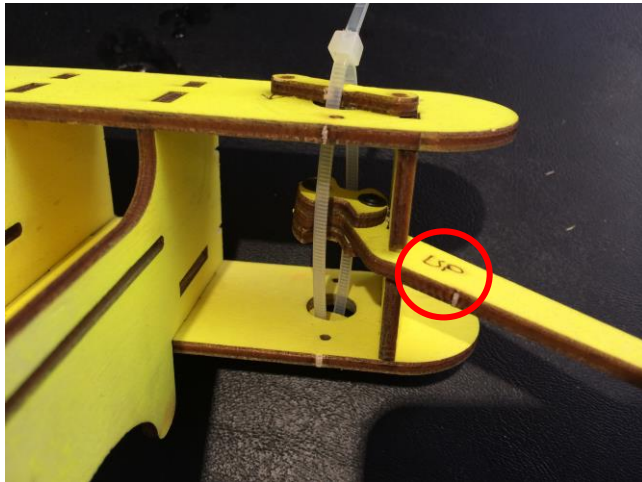


After inserting the zip tie, insert a round part into the zip tie, as shown in the picture.

DO NOT USE GLUE!!

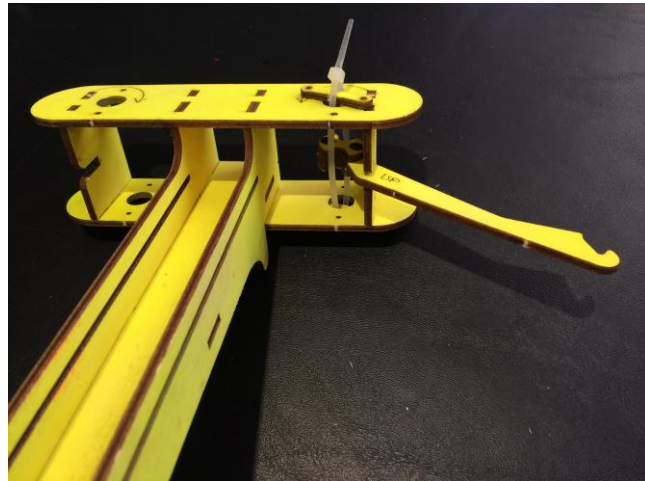
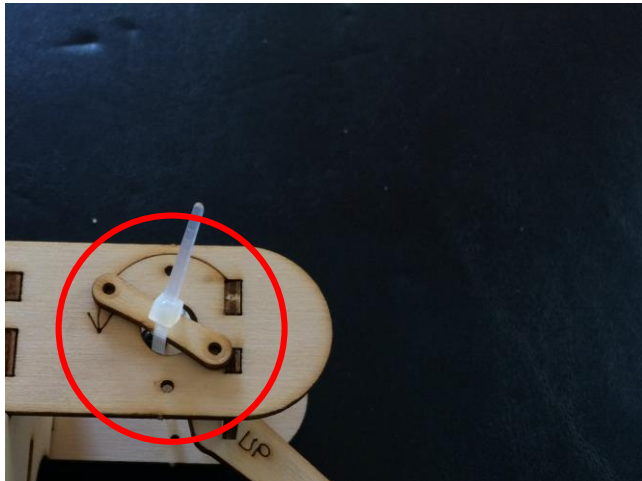


Insert the same part into the zip tie on the lower part as well



Take one arm and insert the circle on the edge into the zip tie. So the zip ties are aligned with the circle's cracks.

Make sure the arm is facing up. Search for the word "UP"



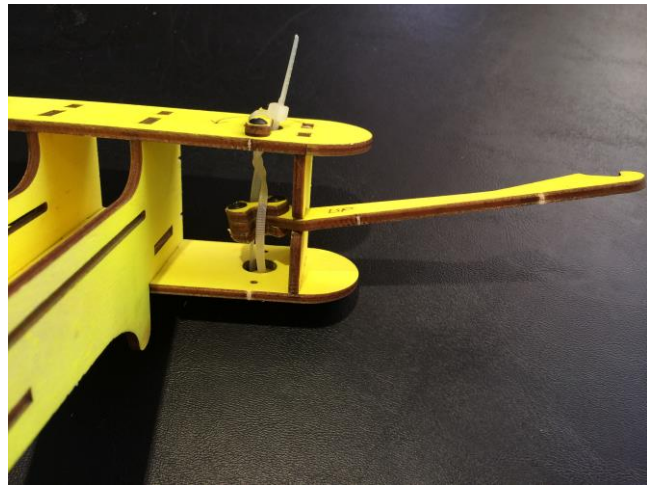
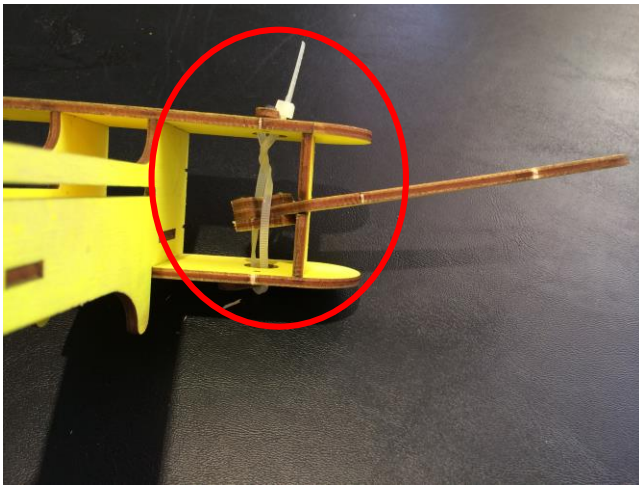
Twist the round part in the direction of the arrow.

DO NOT TWIST THE OTHER WAY!!!

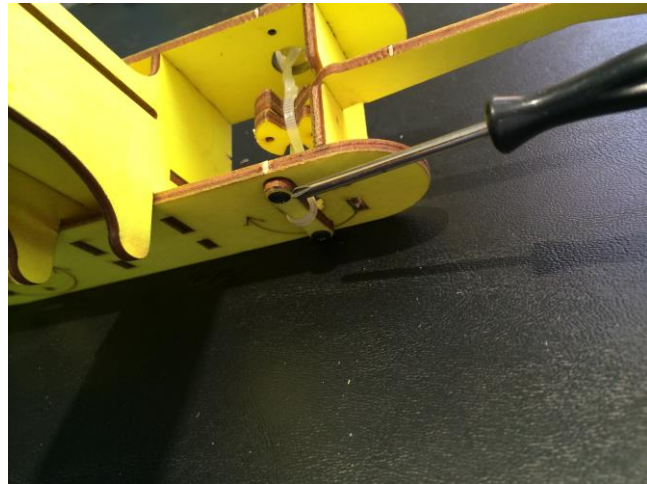
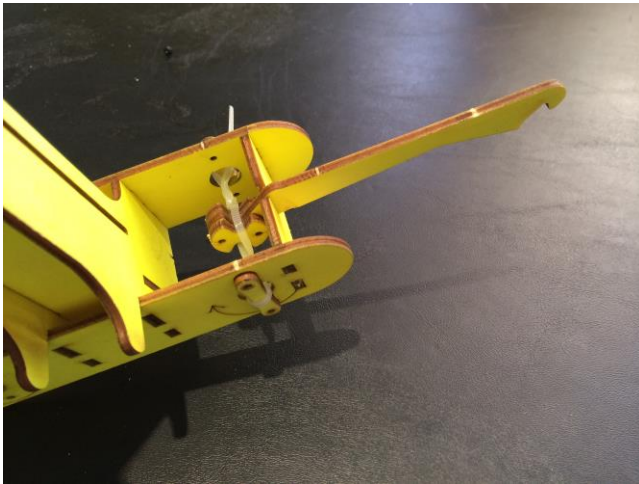
3 twists should be enough



Hold the part down, and tighten is using 2 bug screws

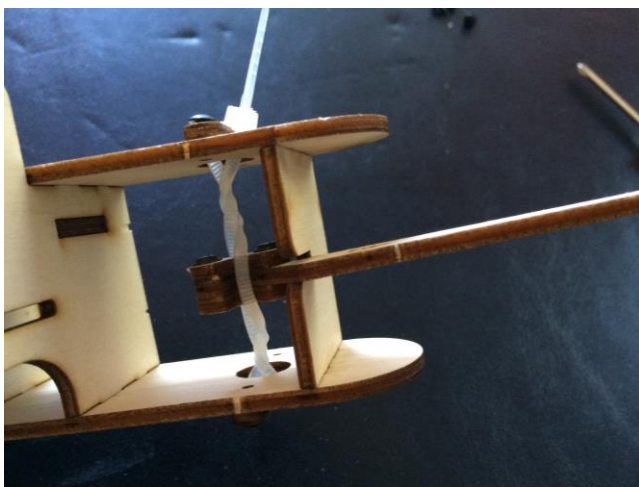


You can see how the zip tie is twisted on the top part



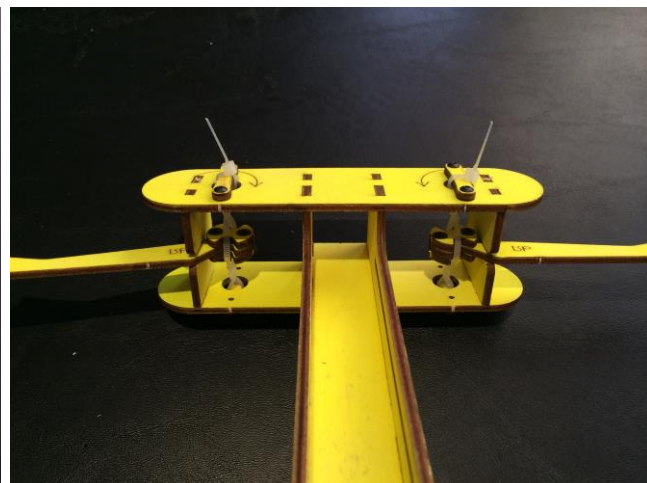
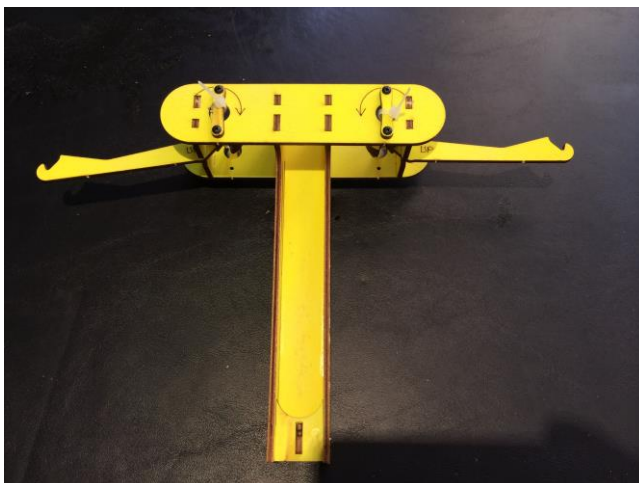
Do the same thing exactly with the bottom part. Twist the part in the arrow's direction. 3 twists should be enough.

Hold the part and tighten it with 2 more bug screws

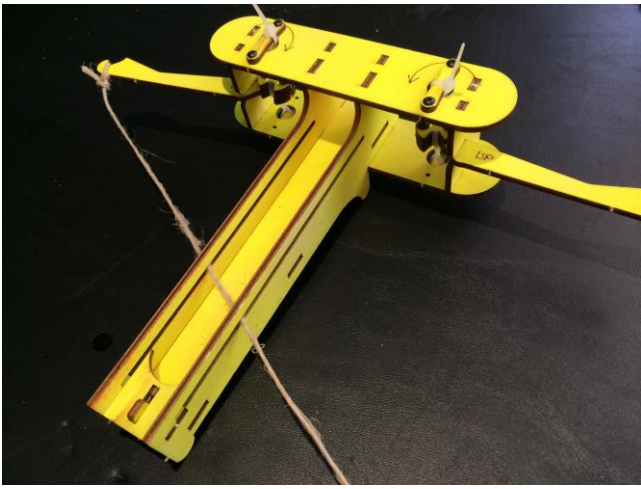


After you're done, each arm should be locked on both side with a twisted zip tie.

Do not continue, until you checked and fixed all models.



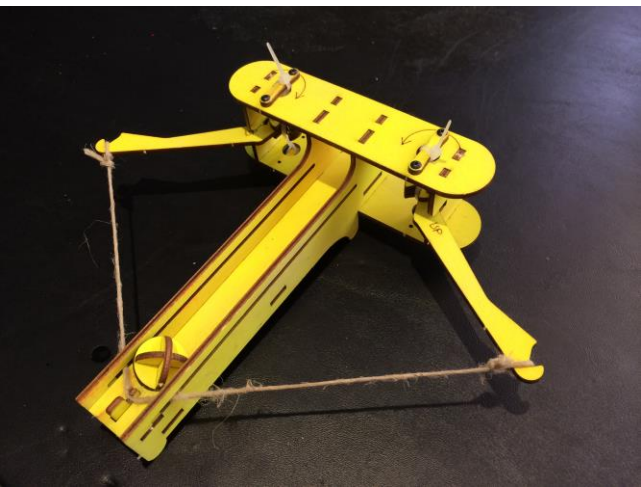
Once done with one arm, do the same process for the 2nd arm. Make sure you check the arm's direction and the twisting direction.



After checking both arms. Tie a rope to the outer side of one of the arms.



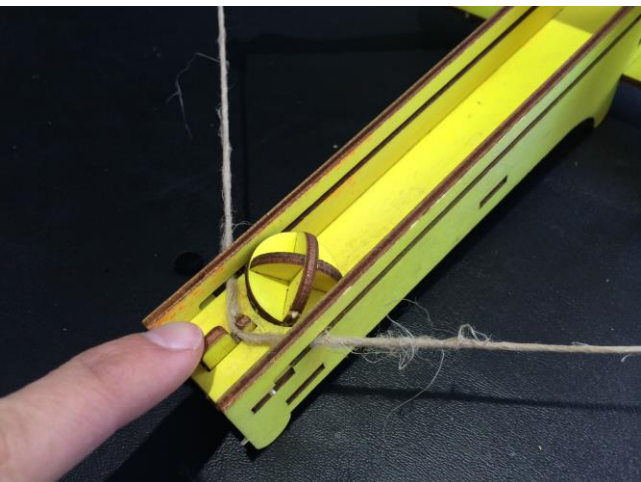
Insert the rope into the crack on the body. (make sure it goes into the crack of both walls)



Tie the other side to the 2nd arm.

Check all the steps so far, and if everything is correct, you're done!

Now you can pull the string back and hold it with the trigger.



Push the trigger down, in order to release the string and shoot the ball.