

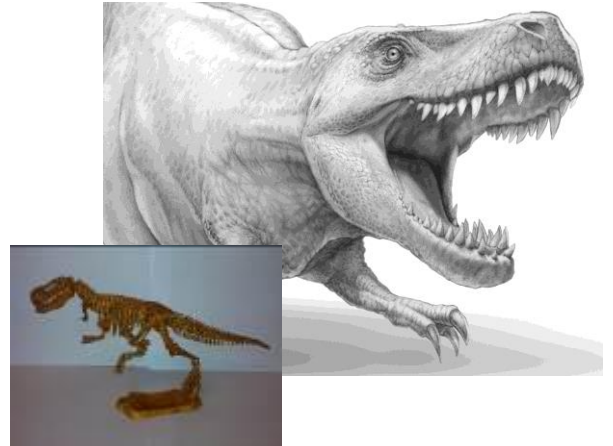
TYRANNOSAURUS REX INFORMATION SHEET (Name in Greek: Tyrant Lizard)

The Tyrannosaurus Rex was one of the largest known land predators. The most complete specimen measures up to 40 ft. length, and 13 ft. tall at the hips. It was by far the largest carnivore in its environment, and could run as fast as 25 mph.

The dinosaur's long name is commonly abbreviated to T. rex (rex meaning "kind" in Latin).

The T. Rex's back legs were very strong, and balanced with his heavy skull, which was 5 times the size of its body.

Its jaw muscles were of the strongest in its body. Using its sharp teeth, which were often as long as 6 inches long, created a dangerous combination. Using this combination, the T. rex could rip and pop the shield of any other dinosaur.



The T. rex's skull was huge in comparison with the rest of its body. Therefore with the years, this creature developed in a way that made many of its skull's bones hollow. This development decreased its weight without compromising its abilities. Unlike many other dinosaurs, its head was wide in the back but narrow in the front. This gave the T. rex an unusually good binocular vision, he was able to use both his eyes. This vision helped the dinosaur in its hunting for food.

Research shows that the T. rex's strong tail helped it to quickly approach its prey. Scientists also think that with each bite the T. rex could eat up to 510 pounds of meat. At only 2 years old, the T. rex weighed up to 66 pounds. At 20 years old, it reached its maximum weight. Scientists believe that the dinosaur lived to 30 to 35 years. There are no fossils found that can tell us otherwise.

The first T. rex fossil was discovered in 1902. Surprisingly, this famous dinosaur did not exist 250 million years ago. Scientists think it only appeared a short time before the dinosaurs were extinct. Some think that scientists have discovered many T. rex fossils. But, as of today, only 30 T. rex fossils were found. Some of these fossils are complete skulls. Most T. rex fossils were found in North America. We see T. rex models in many museums, but the models presented are not original fossils. They are an exact copy.

Researchers continue to argue about the T. rex's eating and hunting habits. Some think that he used to eat dead animals only. They think that it waited for other dinosaurs to attack the prey, scare the other dinosaurs away and then collect the prey. Others, however, believe that the T. rex was a born hunter, and hunted for its prey on its own. Others also believe that it practiced both hunting types.

This may be the most famous dinosaur. It appeared in different movies and television programs. We can only continue to wonder about its color and habits. We will never know for sure because the T. rex was extinct with the rest of the dinosaurs 65 million years ago.