

## Archaeopteryx 3



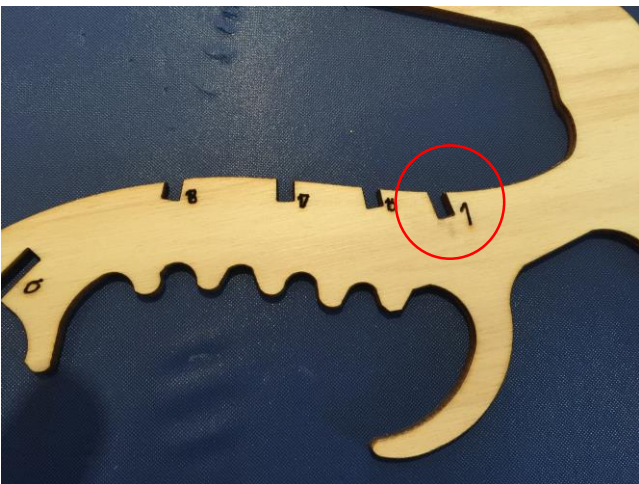
Before starting, check all the parts from the previous lesson.

Today we are going to assemble the body.

Pop out the parts shown in the picture



We are going to insert the ribs from small to large



The front hole marked "1" SHOULD STAY FREE!!!

Make sure the students DO NOT put glue in the front crack.

Before handing out the glue, show the students how and where to glue the ribs.



First, glue only the smallest rib into the crack closest to tail.

After all the students got this part right, continue with the other ribs.



Glue the medium and large sized ribs into their place. Make sure again the front crack is free.



Pop out the parts shown in the picture



Glue both claws to their place. For esthetics try and have the students glue the claws facing the same ways.

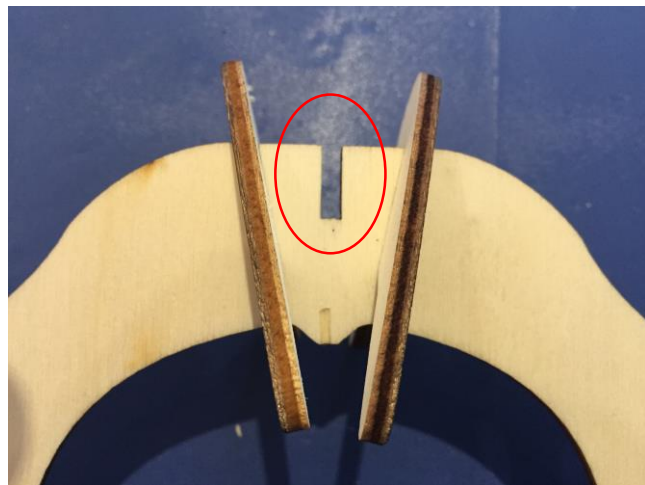


CHECKPOINT!!!

Check all the models before continuing.

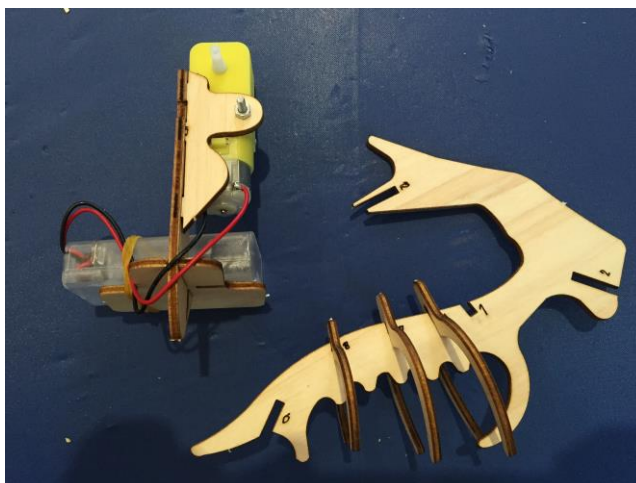


Pop out the parts shown in the picture.



Glue the tail when both parts are facing the same way. Make sure the middle crack stays free (red circle).

CHECKPOINT!



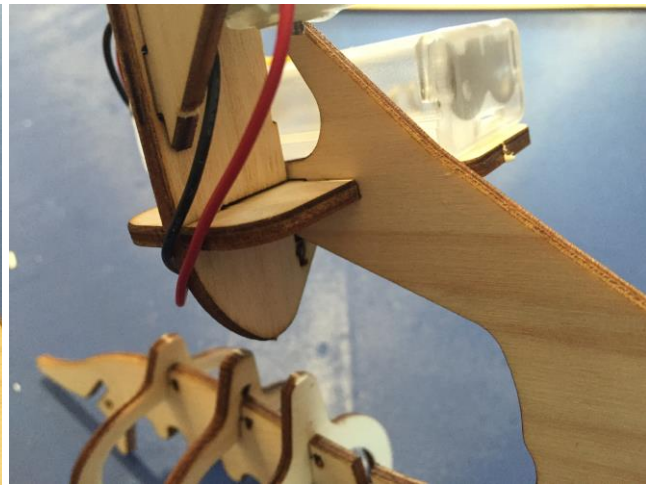
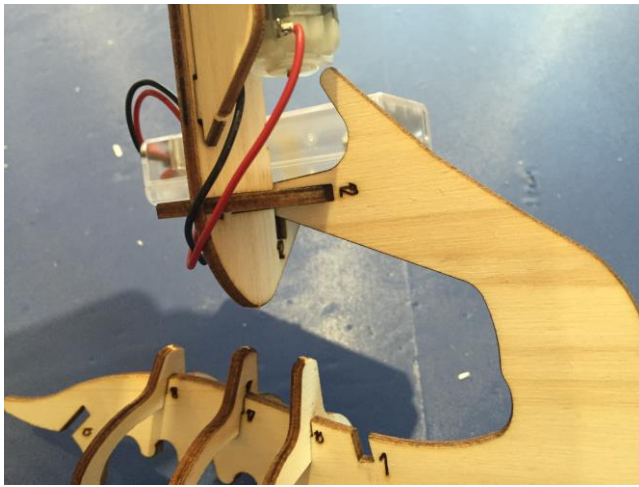
Next, we are going to glue the body to the card.

Carefully have the students take the card out of their plastic bags.

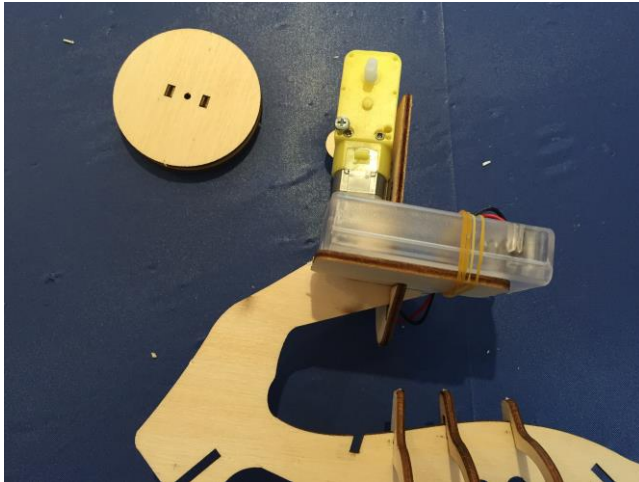


We are going to connect the top part of the body into the card.

We are going to slide it into the crack between the motor and the battery box.

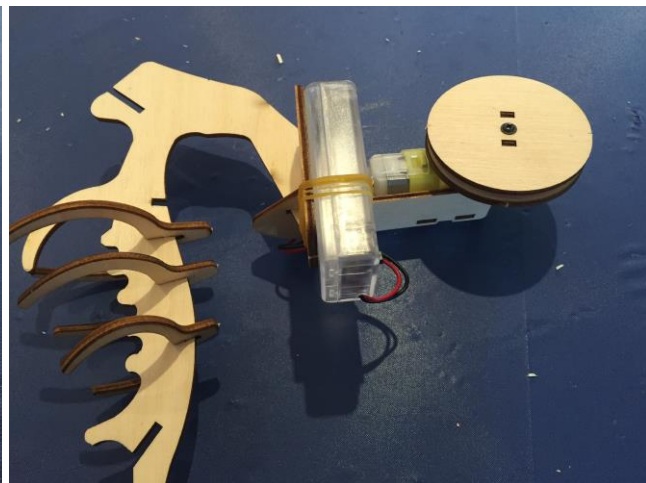
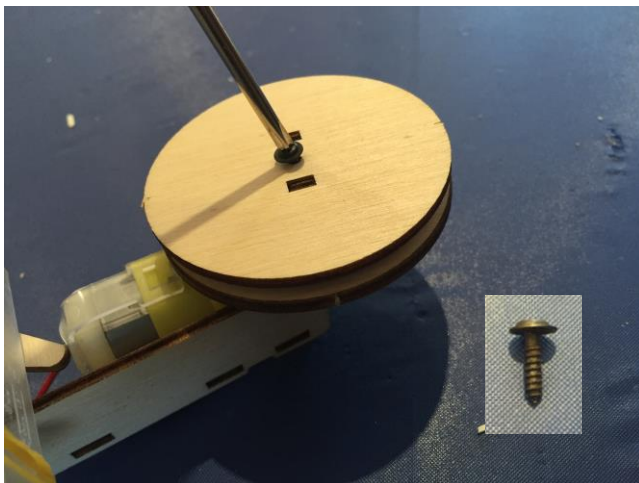


Apply glue in the crack and slide the top part into the cards, carefully push it all the way in. CHECKPOINT!!!! Check all the models.



If you have enough time left (10-15 minutes) continue to the next part.

If not, collect all the parts in the plastic bags, collect the tools and clean the classroom. Continue this part next lesson.



Take the wheel and place it on the motor (above the battery box). Hand the students a driller screw, and screw in into the wheel.