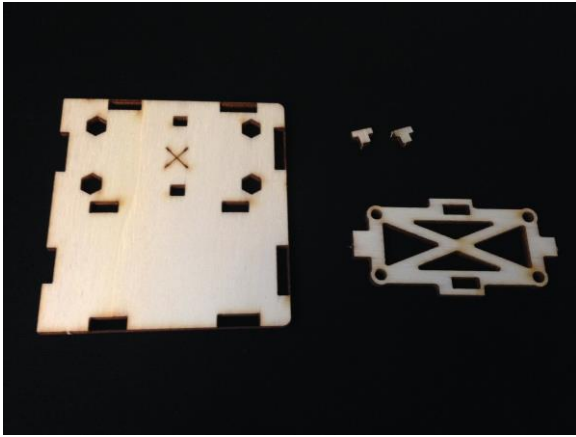


Control Box – lesson 1



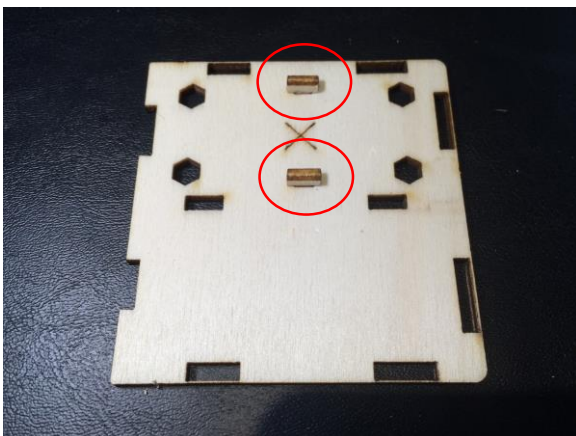
After painting and drying the wooden sheet, break down and file the parts as shown in the picture.

Make sure the kids do not lose the small wooden parts.

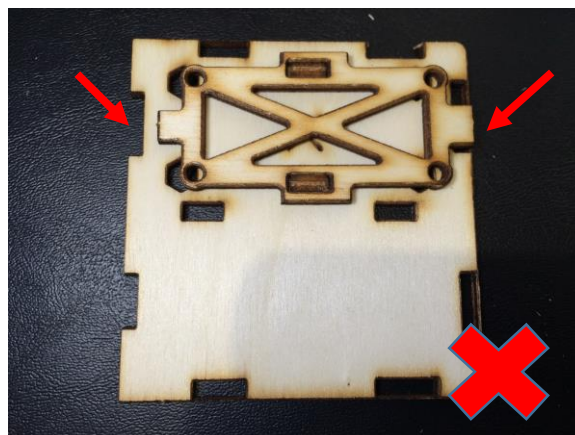
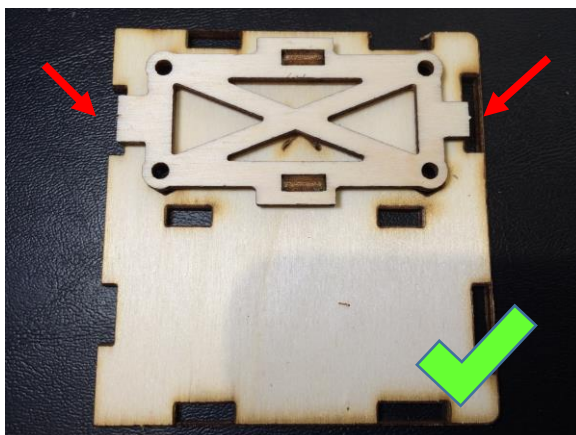
The base part should be on the table, when the "X" is visible and facing up.



These 2 pieces will help us set the X part in place



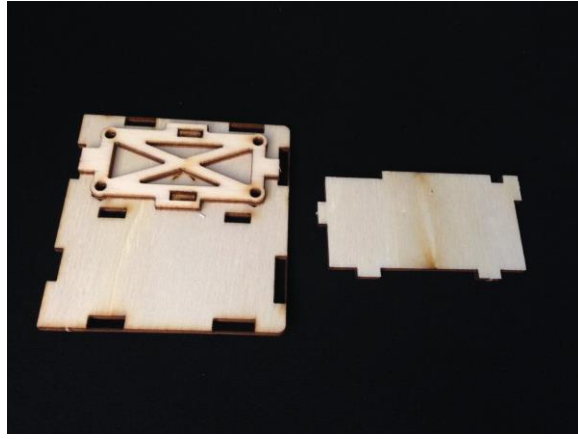
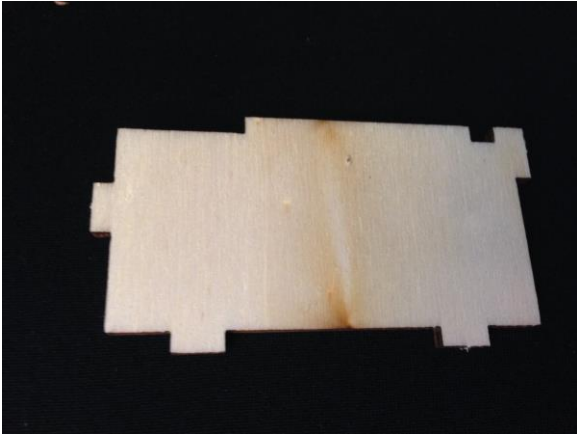
First glue the small wooden parts to their proper place (as shown in the picture)



Then glue the X part to its place.

Picture number 1, marked with a "V" shows us the proper way to glue this part. Make sure the X part doesn't block any cracks.

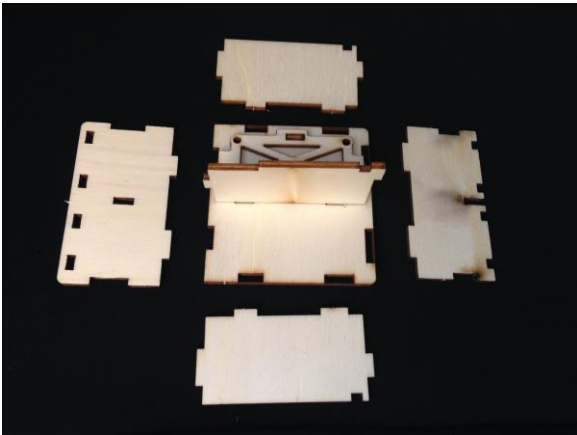
The red arrows show us if the part is sitting properly or not. If there's a gap or a block, simply glue the X part the other way.



Break and file the parts as shown in the picture



If you have time, let the kids try to understand how to assemble the box on their own. DO NOT use glue, until you made sure all the students assembled all the parts correctly.



Break and file the parts as shown in the picture.

As you can see the part are already laid down where they should be assembled



If the students assembled all the parts correctly, hand them glue to glue the parts.

So they need to disassemble the box, apply glue, and reassemble it